



## Creative Arts – Grade 7

Welcome to your Conquesta Olympiad. When you have decided which of the answers is correct, scratch out the letter in the matching square on your answer sheet. Example:- If the answer to question 4 is c, then scratch out the letter c in the square containing c next to the number 4 (see example 1 below). If you've made a mistake and b should have been the answer, neatly cross out the mistake and then scratch out b (see example 2 below).

Example 1:- 4. a b ~~c~~ d

Example 2:- 4. a ~~b~~ ~~c~~ d

1. The main elements of visual art are lines, shapes, tones and .....

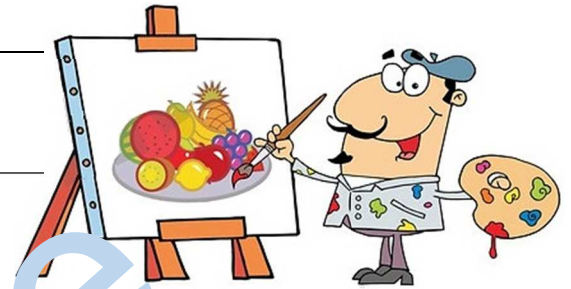
- (a) paint. (b) shades. (c) textures. (d) light.

2. 'Balance' refers to the way art elements are .....

- (a) arranged. (b) thrown away. (c) stacked. (d) cleaned.

3. A still life drawing, or painting, refers to a drawing or painting of .....

- (a) famous portraits. (b) exotic fruits.  
(c) everyday objects. (d) shoes and clothing.



4. To show the different tones in a drawing, you use .....

- (a) an eraser. (b) colours. (c) pencil. (d) shading.

Refer to the pictures on the right, and answer question 5 and 6.

5. The pictures are examples of .....

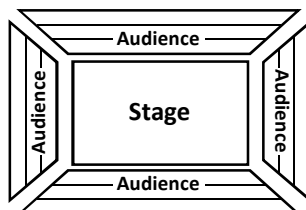
- (a) still life drawings.  
(b) local crafts.  
(c) sketches.  
(d) recycled art.



6. What are the similarities between the objects in the pictures?

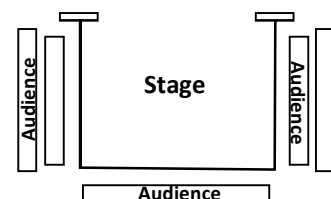
- (a) They are both useful.  
(b) They are made from natural materials.  
(c) They both have decorated surfaces.  
(d) All of these options are correct.

7. What do you call it when the audience is seated all around the stage, as pictured below?



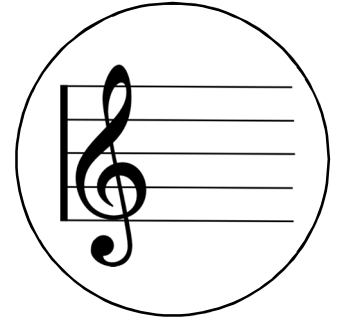
- (a) Proscenium arch stage.  
(b) Thrust stage.  
(c) Arena style stage.  
(d) None of the above are correct.

8. What is the name of the stage that extends into the auditorium, where the audience sits around the stage on three sides?



- (a) Proscenium arch stage.  
(b) End-on stage.  
(c) Arena style stage.  
(d) Thrust stage

Look at the picture on the right and answer questions 9 and 10.



9. This 'clef' is known as the ..... clef and it represents the notes played by the right hand when playing the piano.

- (a) bass (b) treble (c) concerto (d) quaver

10. A 'stave' refers to .....

- (a) the duration of the notes.  
 (b) the lines and spaces where the notes are placed.  
 (c) how fast a song is played.  
 (d) semibreves and crotchets.

Match the notes at (a) – (d) with their correct names at questions 11 – 14.



11. Crotchet.      12. Quaver.      13. Semibreve.      14. Minim.

15. Dance is the ..... movement of the human body.

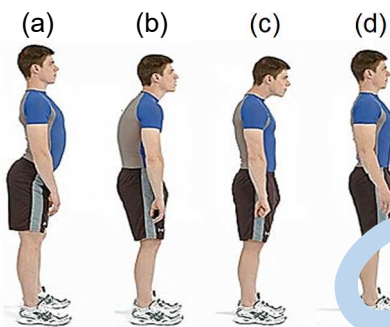
- (a) hardest (b) free (c) rhythmic (d) jerky



16. For an environment to be safe for dancers, it needs to have .....

- (a) an open space. (b) a floor that is not too slippery.  
 (c) a floor that is not too rough. (d) All of the above is correct.

17. Look at the postures in the diagram below, and choose which one is correct for optimal spine alignment and health.



18. Good posture .....

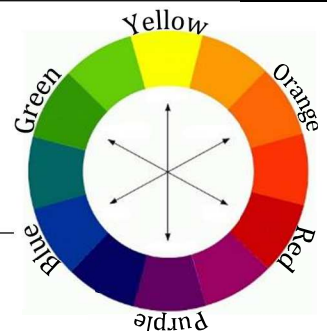
- (a) helps your muscles to work properly.  
 (b) prevents your bone joints from rubbing together.  
 (c) takes strain off your ligaments.  
 (d) All of the above options are correct.

19. Why are warm up exercises very important when preparing to dance?

- (a) They heat up your muscles.  
 (b) They make your joints mobile.  
 (c) Your teachers tells you to do them.  
 (d) They're fun.

20. Colours opposite each other in a colour circle are called ..... colours.

- (a) opposite (b) complementary (c) primary (d) pure



21. A 'shade' is a colour mixed with .....

- (a) white. (b) black. (c) water. (d) blue.

22. A 'tint' is a colour mixed with .....

- (a) blue. (b) water. (c) black. (d) white.

The pictures in (a) – (d) below show how you can communicate with your body. Match the pictures to the correct sentences at questions 23 – 26.

23. "Sorry, I can't hear you."

24. "Brrrr. I'm freezing cold."

25. "Yay! We won!"

26. "Ssssh! Be quiet."

